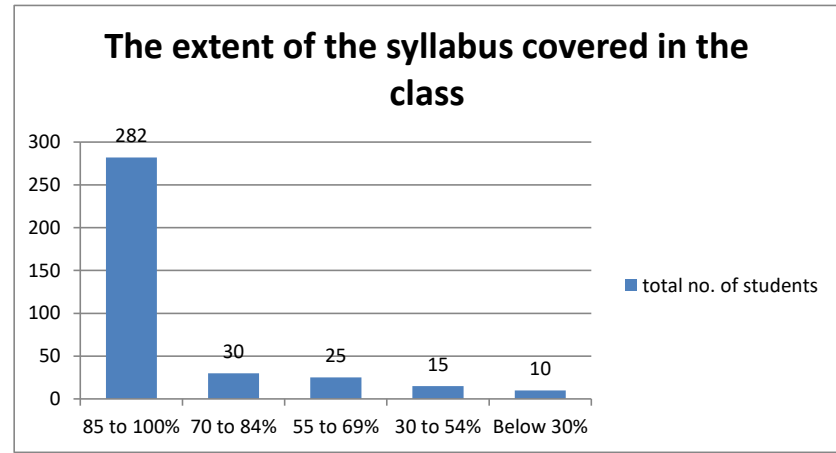


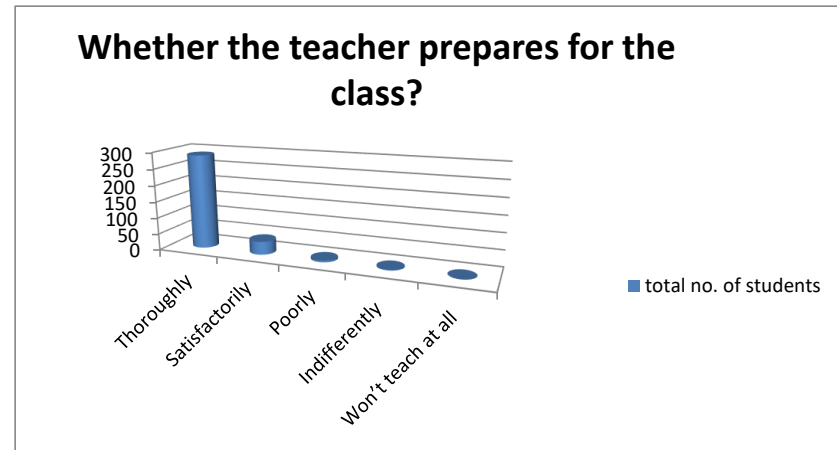
1. The extent of the syllabus covered in the class.

%	85 to 100%	70 to 84%	55 to 69%	30 to 54%	Below 30%
total no. of stude	282	30	25	15	10



2. Whether the teacher prepares for the class?

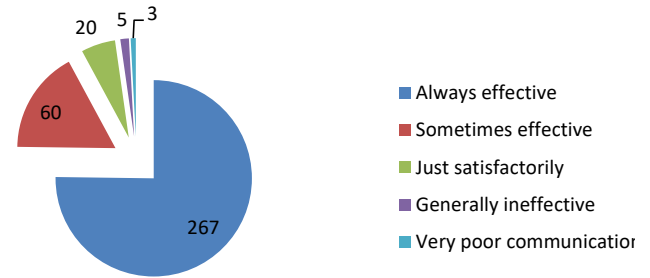
Responses	Thoroughly	Satisfactori	Poorly	Indifferentl	Won't teach at all
total no. of stude	288	40	5	2	0



3. How effectively the teacher interacts with you?

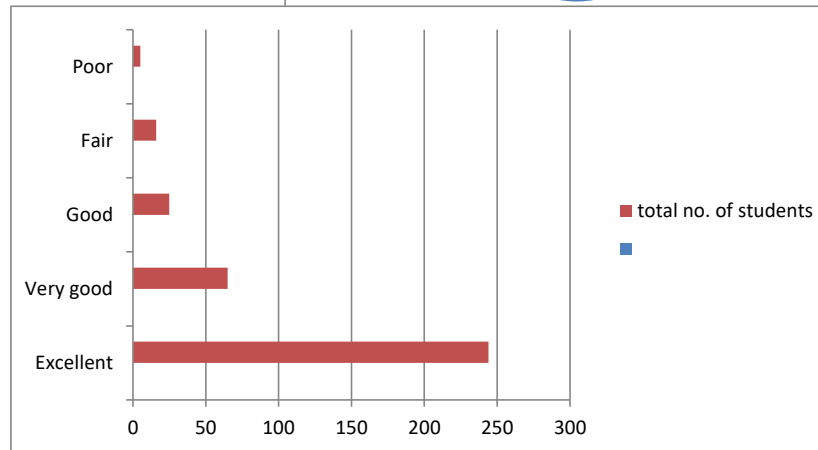
Responses	Always effective	Sometimes effective	Just satisfactory	Generally ineffective	Very poor communication
total no. of students	267	60	20	5	3

How effectively the teacher interacts with you?



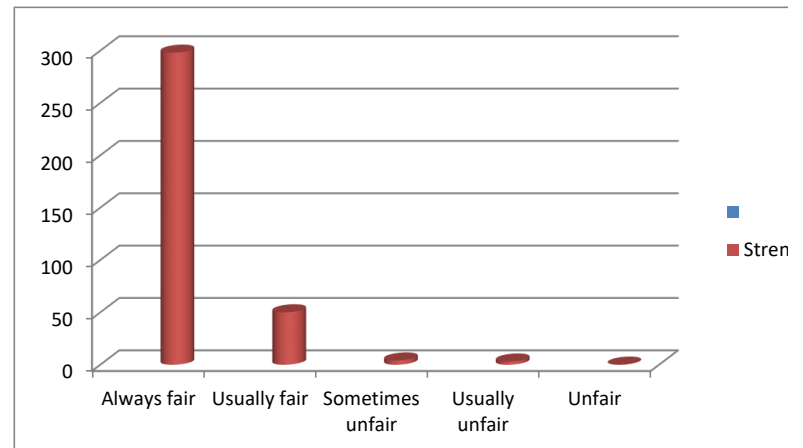
4. A Teacher passion of teaching expressed as such?

Responses	total no. of students
Excellent	244
Very good	65
Good	25
Fair	16
Poor	5



5. How frequently the teacher follows justifiable internal assessments?

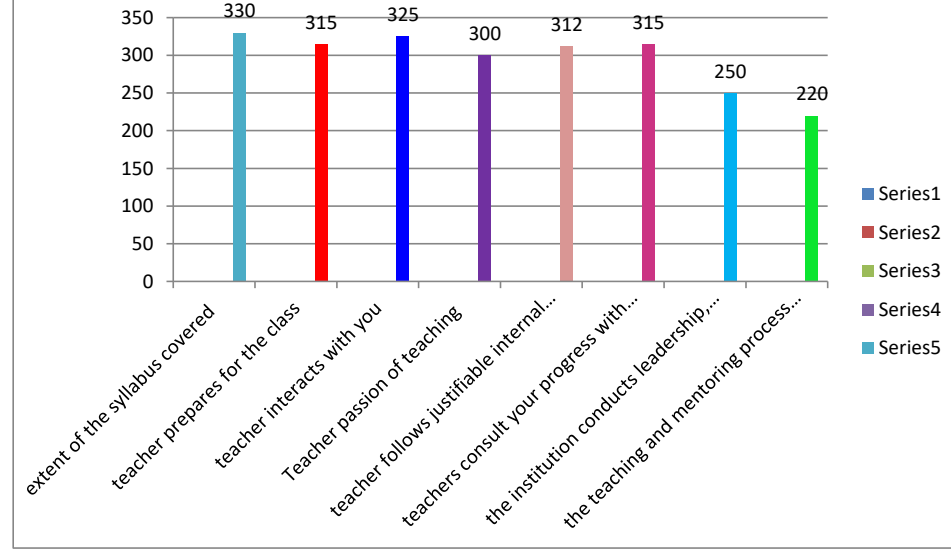
Responses	Strength
Always fair	298
Usually fair	50
Sometimes unfair	4
Usually unfair	3
Unfair	0



Questions

extent of the syllabus covered	330
teacher prepares for the class	315
teacher interacts with you	325
Teacher passion of teaching	300
teacher follows justifiable internal assessments	312
teachers consult your progress with regards to assignments	315
the institution conducts leadership, student exchange and fi	250
the teaching and mentoring process in the institute promote	220

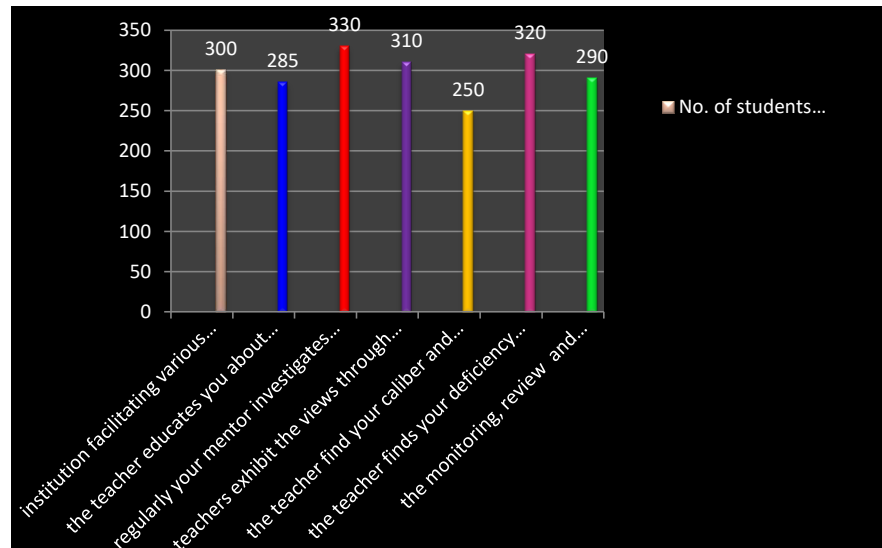
No. of students positive response



Questions

institution facilitating various opportunities to learn and grow	300
the teacher educates you about expected competencies cou	285
regularly your mentor investigates about the task assigned to	330
teachers exhibit the views through applicability of examples	310
the teacher find your caliber and motivate you to get the rigl	250
the teacher finds your deficiency weaknesses and guides you	320
the monitoring, review and continuous quality improvemer	290

No. of students positive response

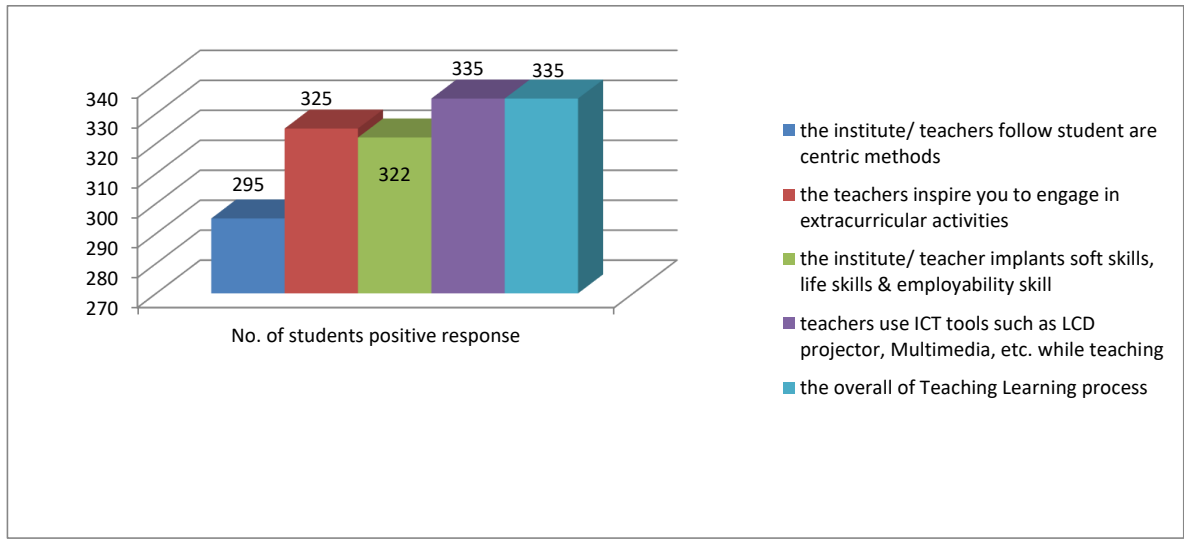




Questions

No. of students positive response

the institute/ teachers follow student are centric methods	295
the teachers inspire you to engage in extracurricular activitie	325
the institute/ teacher implants soft skills, life skills & employ	322
teachers use ICT tools such as LCD projector, Multimedia, et	335
the overall of Teaching Learning process	335



n

length

